

**The Rice Memorial Clinic Foundation was established by John and Mildred Rice in memory of his parents, William and Isabel Rice.**

**Sources of Additional Information on Careers in Mental Health:**

**National Association of Social Workers  
7981 Eastern Avenue  
Silver Spring, MD 20910  
[www.naswde.org](http://www.naswde.org)**

**American Psychological Association  
750 First Street, NE  
Washington D.C. 20002-4242  
[www.apa.org](http://www.apa.org)**

**Developmental Disabilities Nurses Association  
P.O. Box 536489  
Orlando, FL 32853-6489  
[www.ddna.org](http://www.ddna.org)**

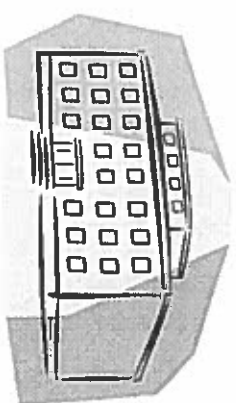
**American Psychiatric Association  
1400 K Street N.W.  
Washington, D.C. 20005  
[www.apta.org](http://www.apta.org)**

**National Organization for Human Service Education, Fitchburg State College  
P.O. Box 6257  
Fitchburg, MA 01420  
[www.nohe.com](http://www.nohe.com)**

**American Occupational Therapy Association  
P.O. Box 1725  
1363 Piccard Drive  
Rockville, MD 20850-4375  
[www.aota.org](http://www.aota.org)**

**American Physical Therapy Association  
1111 North Fairfax Street  
Alexandria, VA 22314  
[www.apta.org](http://www.apta.org)**

**RICE MEMORIAL  
CLINIC  
FOUNDATION**



**COMMUNITY  
MENTAL HEALTH  
CAREERS  
SCHOLARSHIP  
AWARD  
PROGRAM**

**The Rice Memorial Clinic Foundation has established a Scholarship Program to promote careers in professions related to Community Mental Health.**



**Scholarship money is available to a graduating senior from each high school in the area served by Copper Country Mental Health Services.**



**Scholarship applicants from previous years are invited to reapply for continuing scholarships.**

**Community Mental Health Professionals provide a wide range of services to individuals and families in the community who are living with the challenges of mental and developmental disabilities.**



**Careers with significant opportunities in Community Mental Health include:**

- Nursing**
- Occupational Therapy**
- Physical Therapy**
- Teachers of Emotionally Impaired**
- Psychology**
- Social Work**
- Speech/Language Pathology**



**Scholarship applications are invited from graduating seniors who have been accepted into a college program from any of the following schools:**

**BARAGA COUNTY**

- Barraga High School
- L'Anse High School
- Sacred Heart School

**HOUGHTON/KEWEENAW COUNTIES**

- Calumet High School
- Horizons High School
- Chassell High School
- Copper Country Christian School
- Dollar Bay High School
- Hancock High School
- Houghton High School
- Jeffers High School
- Lake Linden High School

**ONTONAGON COUNTY**

- Ewen-Trout Creek High School
- Ontonagon High School

**For an application, contact the High School Principal or Counselor from your school**

**RICE MEMORIAL CLINIC FOUNDATION  
2021 SCHOLARSHIP AWARD**

The Rice Memorial Clinic Foundation has established a Community Mental Health Careers Scholarship Program for students graduating from High Schools in Baraga, Houghton, Keweenaw, and Ontonagon Counties. One \$600.00 Scholarship will be awarded to a 2021 graduating senior from each High School who meets the following criteria and is nominated by the High School Principal. The scholarship is renewable annually for all four years of a student's college career **for up to \$2,400.**

*Criteria:*

---

1. The student awarded the Rice Memorial Clinic Foundation Scholarship must graduate during the academic year (September 1 - June 30) in which the scholarship is awarded.
2. Accepted for admission to a college or university.
3. Pursing a degree in one of the following disciplines:
  - \* Nursing
  - \* Occupational Therapy
  - \* Physical Therapy
  - \* Psychology
  - \* Social Work
  - \* Speech/Language Pathology
  - \* Teacher of emotionally impaired
4. The student must have a record of participation in school activities (student government, clubs, athletics, and student organizations) and/or community activities (girl scouts, boy scouts, and volunteer organizations, athletics, church).
5. Citizenship and leadership will be considered.
6. Write an essay of approximately 500 words to specifications on application.
7. Submit application to High School Principal's or Guidance Counselor's Office no later than **3:00 p.m., Friday, April 16, 2021.**

Award Timetable:

1. The High School Principal shall notify the Rice Memorial Clinic Foundation Board in writing of the school's nominee for the scholarship and attach a copy of the essay. Each school should mail the nomination and related materials by **4:00 p.m. Friday, April 23, 2021** to:

*Taryn Mason, Institute Director  
CCMHS Institute  
900 W. Sharon Avenue  
Houghton, Michigan 49931*

2. The Rice Memorial Clinic Foundation Board will proclaim scholarship winners in early May.

**RICE MEMORIAL CLINIC FOUNDATION SCHOLARSHIP PROGRAM**

# 2021 APPLICATION

PLEASE TYPE OR PRINT IN INK

Date: \_\_\_\_\_

APPLICANT'S NAME: \_\_\_\_\_

HOME ADDRESS: \_\_\_\_\_

CITY: \_\_\_\_\_ STATE: \_\_\_\_\_ ZIP: \_\_\_\_\_

TELEPHONE: \_\_\_\_\_ EMAIL: \_\_\_\_\_

PARENT(S)/GUARDIAN/OTHER: \_\_\_\_\_

SCHOOLS ACCEPTED FOR ADMISSION:

AREA OF STUDY: \_\_\_\_\_

ACADEMIC OBJECTIVE: \_\_\_\_\_

## EDUCATION:

List in chronological order the high school(s) you have attended, the high school from which you will graduate.

SCHOOL	LOCATION	DATES ATTENDED
--------	----------	----------------

_____	_____	_____
_____	_____	_____
_____	_____	_____
_____	_____	_____

## RICE MEMORIAL CLINIC FOUNDATION SCHOLARSHIP PROGRAM 2021 APPLICATION

*Please answer the following:*

Extracurricular activities and years involved (include athletics, art, drama, forensics, school organizations and clubs, music, military organizations, etc.)

List honors, awards and prizes earned in school (including any office held in school organizations):

List activities and honors outside of school (church organizations, community activities):

*Review carefully the Brochure and General Guidelines prepared by the Rice Memorial Clinic Foundation. Organize your thoughts clearly, and write an essay explaining why you want to continue your education, what you hope to accomplish while in college (other than to graduate), and how you hope to put your education to use after you graduate. Be sure to indicate why you want this scholarship. This essay should be approximately 500 words, must be typed on a separate sheet of paper, and attached to this application.*

---

This application must be returned to your principal's or guidance counselor's office no later than 3:00 P.M., Friday, April 16, 2021.